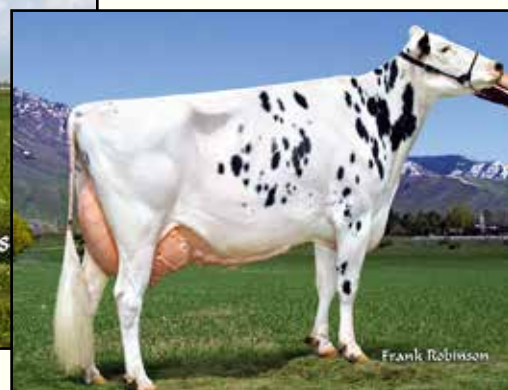


# Western Spring National Sale 2018



**CANYON-BREEZE AF ARLETT-ET EX-93 2E**  
DAM OF LOT 3



**CANYON-BREEZE MOR ALICA-ET EX-95 2E**  
2ND DAM OF LOT 3  
*All-Utah Aged Cow 2010*



STEVEN GILLINS  
PO BOX 126  
MINERSVILLE, UT 84752  
435-386-2458

## CANYON-BREEZE DMAN ASPEN-ET

840003129404904  
Born: February 6, 2017

### Val-Bisson Doorman-ET

CAN 107281711 99%RHA EX-90-CAN ST'16 \*TV \*TY  
PTA -22M +38F +25P 99R 4/18  
PTA +2.2PL 2.53SCS -1.4DPR 5.5%DCE  
PTA +3.61T +2.54UDC +1.72FLC 99R 4/18  
GTPI +2275G

### Canyon-Breeze Af Arlett-ET

68974000 Excellent-93 EEEEE 2E  
4-08 3x 365d 39130 3.7 1454 3.2 1266  
3-02 3x 365d 36000 3.2 1142 3.2 1134  
• 4th 5-Year-Old, Western Spring National 2016  
• 5th 4-Year-Old, Western Spring National 2015

### De-Su 521 Bookem-ET

66636657 Excellent-90 GM 8/15 \*TV \*TL \*TY \*TD  
PTA +1266M +30F +48P 99R 4/18  
PTA +1.46T +1.20UDC +1.19FLC GTPI +2281G

### Val-Bisson Shottle Imelda-ET

CAN 106173432 Excellent-94 8\*  
4-03 2x 365d 40505 3.8 1550 3.6 1455  
6-08 2x 322d 32340 4.6 1483 3.9 1246

### Mr Atlees Sht Aftershock-ET

65249839 Excellent-92 ST'12 \*TV \*TL \*TY \*TD  
PTA -20M +1F -14P 99R 4/18  
PTA +2.23T +1.97UDC +1.20FLC GTPI +1674G

### Canyon-Breeze Mor Alich-ET

61763615 Excellent-95 EEEEE 2E  
5-06 3x 365d 41350 3.5 1439 3.4 1388  
3-11 3x 365d 37960 3.4 1293 3.3 1246  
Life: 1815d 170810 3.6 6173 3.4 5805  
• All-Utah Aged Cow 2010  
• Grand Champion, Utah State Fair 2008

### 3rd Dam

#### Canyon-Breeze Jolt Angel-ET EX-90 DOM

8-00 3x 365d 37610 4.0 1500 3.6 1349  
Life: 2635d 214390 4.1 8693 3.7 8001

### 4th Dam

#### Canyon-Breeze Wst Amber-ET EX-93 GMD DOM

2-10 3x 365d 38790 3.7 1420 3.3 1282  
Life: 1486d 137960 3.7 5149 3.3 4602

- 1st 4-Year-Old, Western Spring National 1996
- All-Utah Senior 3-Year-Old 1995
- 1st Sr 3-Year-Old, Western Spring National 1995

### 5th Dam

#### Clarney W C Mark Abigail EX-91 2E GMD DOM

8-00 3x 365d 41250 3.6 1502 3.1 1286  
Life: 2379d 205659 3.7 7711 3.3 6705

### 6th Dam

#### Dirkmar Bell Abigail VG-85 VG-MS

8-04 2x 305d 24210 3.3 787 3.3 794  
Life: 1866d 138540 3.4 4741 3.3 4504

# Western Spring National Sale 2018



**TRIPLECROWN SILVER 117-ET VG-85**  
DAM OF LOT 14

# 14

**CORY GILLINS**  
PO BOX 291  
MINERSVILLE, UT 84752  
435-386-2282

### Welcome Legendary 2870-ET

840003125066459 \*TY \*TV  
PTA +867M +68F +34P 80R 4/18  
PTA +8.9PL 2.62SCS +2.4DPR 6.8%DCE  
PTA +1.89T +1.55UDC +1.93FLC 79R 4/18  
GTPI +2590G

### Triplecrown Silver 117-ET

84000 3128860377 Very Good-85 VG-MS @ 2-07  
GTPI +2609 +1351M +60F +53P 80R 4/18  
PTA +5.8PL 2.76SCS +.9DPR 4.8%DCE  
PTA +2.42T +2.70UDC +2.04FLC 78R 4/18

### CANYON-BREEZE BROOKLYNN-ET

840003129405061 99%RHA  
Born: July 7, 2017  
GTPI +2642 +1309M +34F +45P 75R 4/18  
PTA +756NM -.05%F +.02%P  
PTA +9.5PL 2.57SCS +2.6DPR 5.9%DCE  
PTA +2.63T +2.82UDC +2.22FLC 74R 4/18  
PTA +108FE +3.0FI 8.0%SCE

### S-S-I Sterling Damaris-ET

840003011538150 \*TY \*TV  
PTA +1084M +45F +40P 99R 4/18  
PTA +1.76T +1.71UDC +1.83FLC GTPI +2400G

### Ms Welcome Cameron Lia-ET

840003010945849 Very Good-88 \*TY \*TV \*TL

### Seagull-Bay Silver-ET

72156794 GM 12/17 \*TY \*TV \*TL \*TD  
PTA +1093M +91F +50P 99R 4/18  
PTA +2.44T +2.94UDC +1.89FLC GTPI +2557G

### Triplecrown Jacey 556-ET

72997675 Very Good-87 EX-MS @ 2-05  
3-05 3x 365d 38120 2.9 1120 3.2 1231  
1-11 3x 365d 37650 3.3 1234 3.5 1305

### 3rd Dam

**T-C-G Jeeves Milley-ET** EX-90 VEVVE  
4-11 3x 365d 40040 3.9 1555 3.3 1323  
Life: 1346d 130180 3.9 5130 3.4 4452

### 4th Dam

**Seagull-Bay Lauden Megan-ET** VG-87 VG-MS  
5-00 3x 365d 36810 3.5 1300 3.2 1180

### 5th Dam

**Seagull-Bay Marsh Maiden-ET** VG-87 GMD DOM  
4-02 3x 365d 42300 3.2 1355 3.0 1269

### 6th Dam

**Claytop Manfred Madison-ET** VG-86 GMD DOM  
4-04 3x 365d 41040 3.8 1570 3.3 1334

### 7th Dam

**Lynmead Celsius Minnow-ET** EX-91 2E GMD DOM  
4-10 3x 365d 49550 3.7 1857 3.2 1592  
Life: 2626d 255910 3.7 9446 3.3 8481

### 8th thru 12th Dams

**CMV Melwood Mindy-ET** VG-85 DOM \*TL  
4-01 2x 365d 36340 3.6 1306 3.4 1238

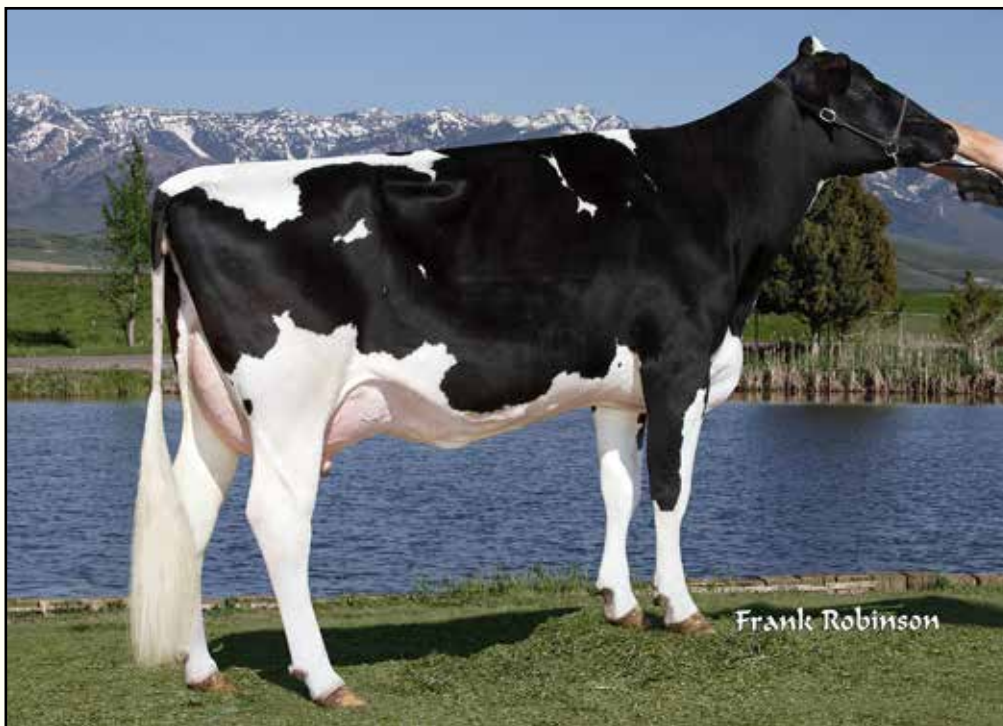
**Briarpatch-R Misty** VG-85 GMD DOM  
3-08 2x 365d 24690 4.1 1011 3.2 794

**Rilara Mars Las Ravena** EX-91 GMD DOM  
4-03 2x 305d 29030 4.6 1330

**Rilara Haven Charming Las-Twin** VG-87 GMD  
6-10 2x 365d 30490 3.4 1029 2.9 877  
Life: 2442d 164400 3.4 5651 2.9 2051

**Rag Apple Locust Grove Charm** VG-86  
5-02 2x 365d 26320 3.6 948

# Western Spring National Sale 2018



**PINE-TREE SHARLA DAPHNE-ET VG-88**  
2ND DAM OF LOT 17

# 17

**CORY GILLINS AND DAN & DEBBIE GILBERT**  
PO BOX 291  
MINERSVILLE, UT 84752  
435-386-2282

### Plain-Knoll King Royal-ET

74564764 99%RHA \*TV \*TL \*TY \*TD  
PTA +1054M +78F +53P 80R 4/18  
PTA +2.8PL 2.82SCS -.7DPR 4.6%DCE  
PTA +3.25T +2.83UDC +1.87FLC 79R 4/18  
GTPI +2624G

### Seagull-Bay Ssire Danica-ET

71618938 Very Good-88 EVEV @ 3-11 \*TL \*TD  
GTPI +2145 +1164M +54F +32P +2.01 4/18  
3-08 3x 365d 35560 3.9 1398 3.3 1188  
2-04 3x 365d 28920 3.5 1005 3.3 941

### DAN-DE KR DURANGO-ET

840003129405122 99%RHA  
Born: September 3, 2017

### Morningview McC Kingboy-ET

72044077 Excellent-92 \*TV \*TL \*TY \*TD  
PTA +1213M +47F +40P 99R 4/18  
PTA +3.21T +2.63UDC +1.25FLC GTPI +2453G

### Plain-Knoll Mogul Mariah

72190592 Very Good-88 DOM  
2-01 3x 305d 31200 3.2 1007 3.4 1073

### Seagull-Bay Supersire-ET

69981349 Excellent-90 GM 8/15 \*TV \*TL \*TY \*TD  
PTA +2034M +100F +64P 99R 4/18  
PTA +.89T +.66UDC -.06FLC GTPI +2536G

### Pine-Tree Sharla Daphne-ET

66372249 Very Good-88 EX-MS @ 4-02 DOM  
4-01 3x 365d 35510 4.0 1416 3.2 1147  
2-02 3x 365d 33900 4.2 1414 3.3 1103  
Life: 1435d 106440 4.1 4359 3.3 3551

#### 3rd Dam

**Pine-Tree Mint Sharla-ET DOM**

#### 4th Dam

**Pine-Tree Outside Mint-ET VG-87 VG-MS DOM**  
4-02 2x 365d 33710 4.2 1407 3.1 1059

#### 5th Dam

**Wesswood-HC Rudy Missy-ET EX-92 3E GMD DOM**  
4-11 3x 365d 40880 4.1 1665 3.2 1308  
Life: 1262d 119610 4.1 4885 3.2 3804

#### 6th Dam

**Wesswood Elton Mimi EX-90 GMD DOM**  
3-05 2x 365d 35380 3.3 1160 3.2 1121

#### 7th Dam

**Wesswood Mandingo Ivy VG-87 VEEV**  
6-05 2x 365d 36330 3.6 1305 3.0 1087  
Life: 1835d 144060 3.4 4933 3.1 4412

#### 8th Dam

**Wesswood Astro Matt Esther VG-87 GMD DOM**  
6-08 2x 365d 31860 3.5 1125 3.1 982  
Life: 1847d 140110 3.6 5029 3.2 4424

#### 9th Dam

**Wesswood Bell Claudette VG-87 GMD DOM**  
9-10 2x 365d 38810 3.6 1383 2.9 1140  
Life: 3634d 280980 3.6 9997 3.1 8625