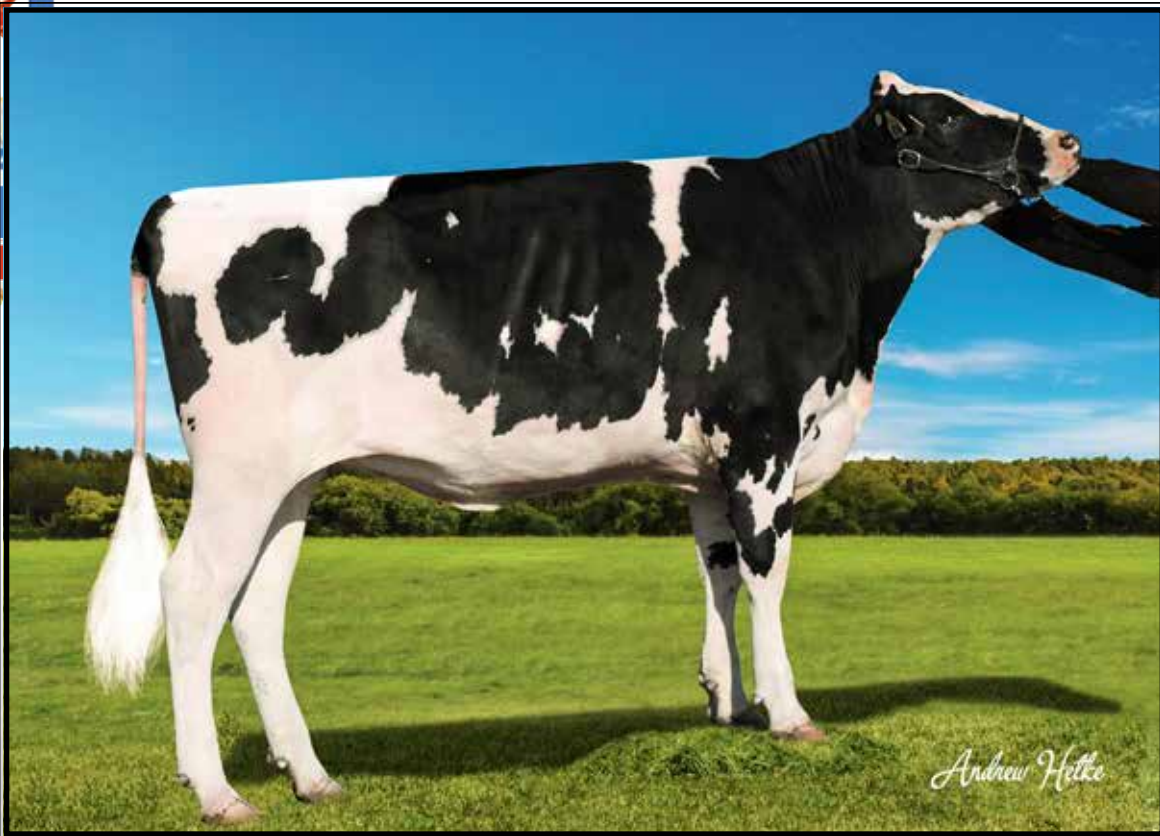


~Fun in the Sun - Vegas Style~



Hollerman Delta 436Y-ET
(She sells as Lot 13 and Dam of Lot 13A)

LOT 13

Hollerman Delta 436Y-ET

3135551924 96%RHA-NA
Born 3/17/16 8/17 PTA +2793GTPI
+1189M +.14% +83F +.03% +46P
+924NMS\$ +9.1PL +4.7DPR 2.71SCS
+1.41T +2.20UDC +1.05FLC
+177FE +4.6FI +2.8LIV 5.7%SCE

Bred 9/11/17, Due 6/17/18 to
7HO13624 Supreme +2831GTPI
(PA = +2812GTPI)

*She sells in package with 5-#1 IVF DT
embryos sired by female sexed Kennedy
PA = +2827GTPI +974NMS

Sire: Pine-Tree Mod Kennedy 713-ET
3132117165 8/17 PTA +2861GTPI
+1487M +.20% +111F +.05% +58P
+1024NMS\$ +9.0PL +3.4DPR 2.91SCS
+1.72T +1.65UDC +.99FLC 75%R
Modesty X VG-86 DOM Supersire

Dam: Delta 436Y (Sells as Lot 13)

Shawn Hollerman

18200 Dunlin Rd
Burtrum, MN 56318
320-760-1177

Mr Mogul Delta 427-ET

72128216 8/17 PTA +2849GTPI
+1817M +.10% +97F +.01% +57P
+951NMS\$ +8.0PL +3.7DPR 2.79SCS
+1.95T +2.51UDC +1.41FLC 95%R
Mogul X VG-87 GMD-DOM Robust

Hollerman Supersire 900

59088141 8/17 PTA +2366GTPI
+381M +60F +26P +619NMS\$ +6.8PL
+2.8DPR +.70T +.76UDC +.56FLC
2-01 317 23050 4.0 930 3.4 775
Sire: Seagull-Bay Supersire-ET

2nd Dam:

58394449

G-79 +GGGG

2-01 353 30430 4.4 1353 3.3 1011
3-02 303 29820 4.1 1237 3.2 941
4-02 346 34550 4.2 1451 3.2 1102

LOT 13A Choice

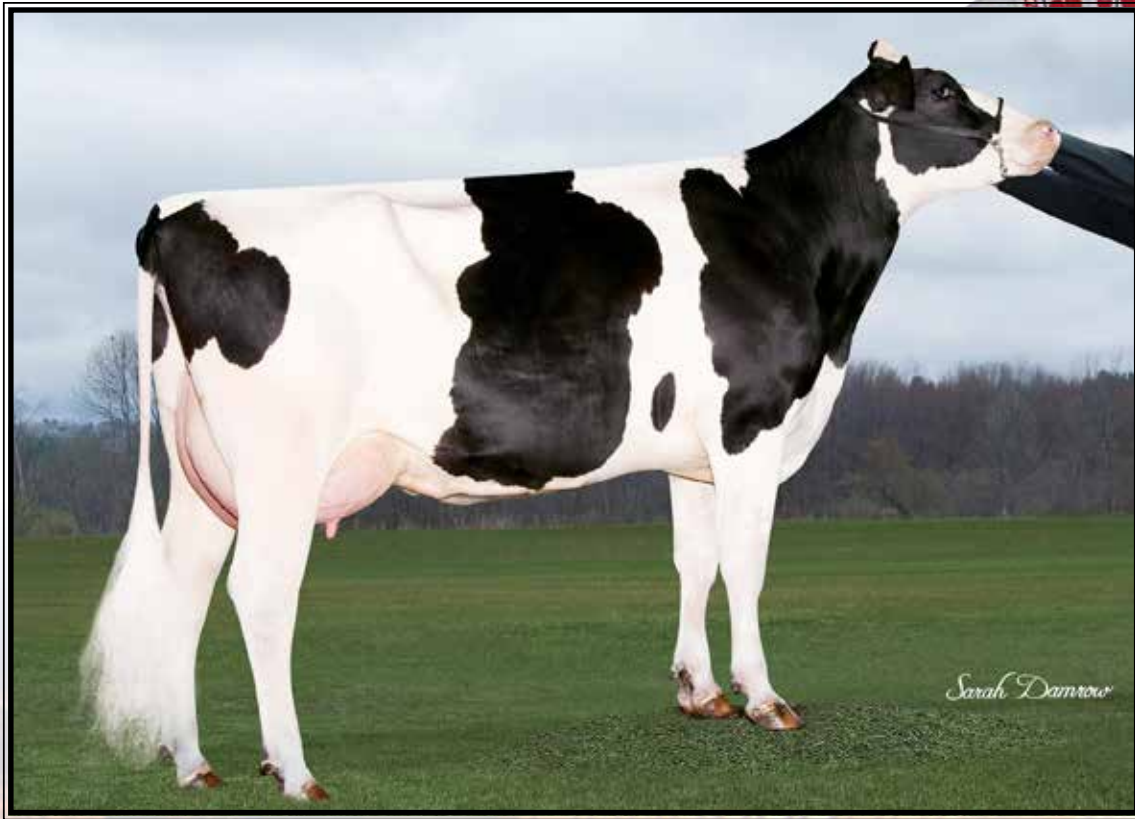
*Selling buyers choice of 6 females born
in October & sired by Rockstar. Buyer
will choose after all have official genomics.

Sire: Fairmont Bayont Rockstar-ET

3132554863 8/17 PTA +2765GTPI
+1605M +.07% +79F +.05% +62P
+912NMS\$ +8.4PL +2.7DPR 2.84SCS
+1.78T +1.73UDC +1.54FLC 75%R
Bayonet X VG-88 Moonboy

Dam: Delta 436Y (Sells as Lot 13)

~Fun in the Sun - Vegas Style~



Hollermann Cabriolet 960G

2-00 305 24420 4.3 1056 3.4 832
(2nd Dam of Lot 40)

Choice

*Selling buyer's choice of
Lots 40A & 40B listed below

Shawn Hollerman
18200 Dunlin Rd
Burtrum, MN 56318
320-760-1177

LOT 40A

Hollermann Jedi 958Y-ET

3139800284 93%RHA-I
Born 11/5/17
Prelim. genomics +2921GTPI
+2565M -.02% +91F -.01% +77P
+1011NM\$ +9.7PL +1.7DPR 2.75SCS
+2.79T +2.28UDC +2.54FLC
SCE 7.7% *HAPLOTYPE FREE

Sire of Lot 40A:

S-S-I Montross Jedi-ET

3123886035 8/17 PTA +2821GTPI
+2624M -.08% +76F +.02% +88P
+888NM\$ +7.5PL +2.7DPR 2.94SCS
+2.06T +1.71UDC +1.35FLC 79%R
Montross X VG-89 DOM Supersire

LOT 40B

Hollermann Frazzled 902Y-ET

3139800228 93%RHA-I
Born 9/15/17 11/17 PTA +2794GTPI
+1847M +.05% +84F +.01% +58P
+927NM\$ +8.6PL +1.9DPR 2.85SCS
+2.10T +2.45UDC +2.38FLC
+180FE +2.2FI +2.7LIV 6.9%SCE

Sire of Lot 40B:

Melarry Josuper Frazzled-ET

74261651 8/17 PTA +2788GTPI
+2502M +.03% +100F +.00% +76P
+964NM\$ +8.0PL +1.0DPR 2.67SCS
+1.18T +1.44UDC +.87FLC 78%R
Josuper X VG-85 Shotglass

Dam of Lots 40A & 40B:

Hollermann Silver 391Y-ET

3130291069 8/17 PTA +2633GTPI
+1296M +80F +52P +828NM\$ +7.8PL
+.2DPR +1.84T +2.10UDC +2.21FLC
Sire: Seagull-Bay Silver-ET

2nd Dam:

Hollerman Cabriolet 960G

2-00 305 24420 4.3 1056 3.4 832
Sire: Co-Op Robust Cabriolet-ET
(Pictured above)

***This is the same family that produced 1HO11989 Romero +2758GTPI**