

Cowsmopolitan Country  
Box 207, 31355 2A Hwy  
Didsbury, AB T0M 0W0  
Phone: 403-335-3780 Fax: 403-335-9230  
website: www.cowsmo.com  
Carol Wright, Editor  
Email: wrightc@xplornet.com

Lexi Wright, Associate Editor/Production  
Phone: (403) 862-5600 Fax: (403) 335-4381  
Email: lwright5@telus.net

Ella Wright, Photography/Ad Design  
Phone: (403) 556-6445  
Email: photos@ellawright.com

Don Wright, Advertising & Subscription Sales  
Cell: (403) 556-0842

Tarah Maw, Eastern Canada Advertising &  
Subscription Sales  
Phone (519) 878-9618  
Email: tmmaw@hotmail.com

Europe - Contact  
Claire Swale, Advertising & Subscription Sales  
Email: claireswale@btinternet.com

Subscription rates:  
Effective September 2006  
Canada: \$26.75 per year (includes G.S.T.)  
USA: \$50.00 per year CAD \$45.00 USD  
Foreign Airmail: \$60.00 per year CDN  
Canada: 2-year \$45.00 (includes G.S.T.)  
USA: 2-year \$90.00 CAD \$80.00 USD  
Foreign Airmail: 2-year \$110.00 CDN  
Canada: 3-Year \$65.00 (includes G.S.T.)  
USA: 3-year \$135.00 CAD \$120.00 USD  
Foreign Airmail: 3-year \$150.00 CDN

G.S.T Registration R132312968  
ISSN 1712-6248

Printed in Canada by Style-Craft Printing  
Publications Mail Agreement No. 40748501  
Postage paid at Regina, SK Canada

We acknowledge the financial support of the  
Government of Canada through the  
Canada Periodical Fund (CPF) for our publishing  
activities.

Canada

Return undeliverable publications to:  
Cowsmopolitan Country  
Box 207, Didsbury, AB T0M 0W0

The material produced is done with the highest  
integrity however, we assume no responsibility for  
errors or omissions. We are responsible for only the  
value of the advertisement.

Cowsmopolitan is published 5 times per year.

No reproduction of material is allowed in any form  
without the permission of Cowsmopolitan Country.

Next Ad Booking Deadline  
February 6, 2012

# In this issue

## Genomic Feature Stories

- 106 A Global Perspective
- 116 Roundtable Thoughts for the Future
- 122 How does it work and where are we now?
- 120 Where are the Hot Genomic Jersey Genetics?

## Other Feature Stories

- 141 All Manitoba Awards
- 102 All Western Nominations

## Management & Finances

- 139 Exchange Traded Funds (ETF's)
- 145 Managing Milk Fat Composition

## Industry

- 38 Canadian Agriculture Hall of Fame Inductees
- 34 Curtis Clark Achievement Award
- 35 Earl VanderMuelen Award
- 35 Nola Brown Award

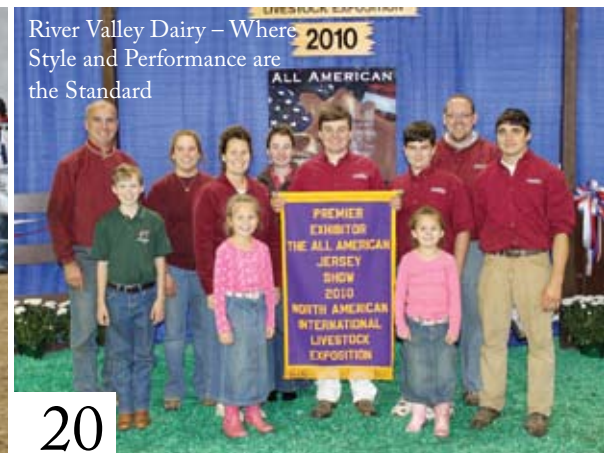


137 Agriscot Show

99 Trinity wins Autumn Opportunity



River Valley Dairy – Where Style and Performance are the Standard



20

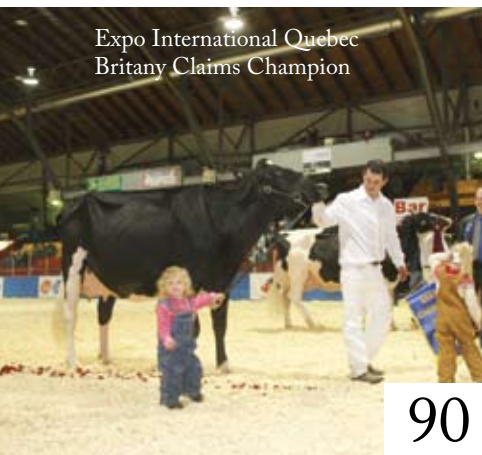


**Shows/Sales**

Agriscot Show - AY, HO, JE, RWHO	137
Autumn Opportunity - HO	99
BC Fall Harvest Show & Sale - HO	26
Classic 4-H Show	140
Cremona Italy Show - HO, JE	125
Expo International QC -RWHO & BWHO	90
Genibeq Sale	98
Genomic Power Sale- TAG	95
Great Northern Sale	120
Legends of the Fall	118
NAILE- AY, BS, GU, HO, JE, MS, RWHO	12
National Ayrshire Show & Sale - UK	137
National Dairy Show - Millstreet Ireland - HO & JE	138
Northern Dairy Expo UK - HO	138
Royal Designer Sale	98
Royal Preview Tag Sale	125
Royal Winter Fair - AY, BS, HO, JE, RWHO	42
Sale of Stars	39
Westerner Championship - HO & JE	30

**Departments**

4-H News	142
Advertisers & Ad Rates	152
Bull Pen	144
Club News	141
Coming Events	148
Editorial & National Director	9
Have You Herd	147
Hooftrimming Question & Answer	95
Ladies & recipes	143
Remember When	16



Expo International Quebec  
Britany Claims Champion

12 Louisville results including  
the All-American Jersey  
Show



Royal Winter Fair  
Missy claims her second Supreme title for 2011



**ON THE  
COVER**

Pictured at the Royal Winter Fair in front of the Princes' Gates. These monumental gates were officially opened in 1927 during the CNE by princes Edward, Prince of Wales and Prince George. The statue at the top of the arch is the "Goddess of Winged Victory." In her hand she holds a single maple leaf. There are 9 pillars to either side of the main arch, representing the 9 Canadian provinces in existence at the time of construction. Flanking the central arch are various figures representing progress, industry, agriculture, arts and science. (L-R) Ja-Ka Hillary Hillbilly EX-95, Reserve Grand Champion World Dairy Expo & Royal Winter Fair 2011 and Old Mill JP Grace EX-95 All-American 2010, owned by Bradner Farms, Abbotsford, BC. See the story on the Donaldson family - More then Meets the Eye on page 82. *Photo by Ella Wright*

